



## DIY Guitar and Bass Kit Instruction Manual

Thank you for purchasing a guitar or bass kit from Pit Bull Guitars and welcome to your new hobby.

Please take the time to read this Instruction Manual, which will give you enough information, tips and tricks to ensure you enjoy the build process and get the absolute best from your Pit Bull Guitars kit.

**Pit Bull Guitars is not in any way connected, affiliated, endorsed, sponsored, or approved by any particular guitar brand (including, but not limited to, Gibson, Fender, Gretsch, or Ibanez) (Brands)**

**The products provided by Pit Bull Guitars are provided 'as is'. These products are not affiliated, endorsed, sponsored, or approved by any Brands.**

**Pit Bull Guitars expressly disclaims any connection or relationship with any Brands.**

### **Acknowledgements**

Many thanks to Forum member Dedman, for taking on the huge task of collating, compiling, and writing this Instruction Manual. Huge thanks also to all our Community Forum members who contributed to this collaborative project.



# DIY Guitar and Bass Kit Instruction Manual

## Contents

Introduction .....	3
My Build Diary .....	3
Before you Start .....	4
Now, before we go any further, some advice: .....	5
What tools do I need?.....	5
Nice tools to have, but not essential: .....	6
Really nice tools to have: .....	6
Building Your Pit Bull Guitars Kit.....	7
“Mock Build” and Fitting the Bridge and Neck.....	7
Test fit the parts.....	7
Fitting the Neck.....	7
Checking the Scale Length .....	8
Fitting the Bridge/Tailpiece .....	9
Test fitting the Neck.....	11
Checking neck alignment .....	11
Preparing the neck.....	12
Painting or Staining.....	16
Preparation for finish.....	16
Painting.....	19
Staining .....	20
Polishing.....	22
Wiring and final Assembly .....	22
Shielding.....	22
Wiring.....	23
Final Assembly .....	26
Mounting pickups and pick guards .....	27
Installing the Bridge .....	27
Installing the Tuners .....	28
Attaching the neck.....	29
Final Assembly, Tuning and Intonation.....	29
Fitting the strings .....	29
Tuning and setting the intonation. ....	29



# DIY Guitar and Bass Kit Instruction Manual

## Introduction

Pit Bull Guitars offers such a wide range of kits; often with multiple options, that we are unable to cover each and every model (and option) in “step-by-step” detail in one Manual.

So, this Manual focusses on the general DIY Kit building processes which are common to most of our kits.

If you have specific issues during your build, we strongly urge you to join our [Community Forum](#).

*Please note: All general build support is provided by the Community Forum, we are unable to provide email or phone support for your build. This does not include warranty issues.*

## My Build Diary

The very first thing you should do, as soon as you receive your kit (or even before), is to start your build diary in the [My Build Diary](#) forum and post your build progress.

Simply register on our Community Forum and got to the My Build Diary Forum. Then simply

click on  , give your Build a Title and post any questions you have.

Almost any build issue or modification will have been dealt with before by our experienced Forum members.

Also, reading other members' Build Diaries offers a gold mine of information, advice and ideas for your own build.

Got a question, just ask!

Register on the Forum here: <http://www.buildyourownguitar.com.au/forum/>

And introduce yourself here:

<http://www.buildyourownguitar.com.au/forum/forumdisplay.php?f=51>

## Before you Start

First thing to know, these guitar kits are not “Ikea Guitars” that you simply paint and assemble; they are the raw product from the same factory that produces guitars for some of the world’s best-known brands. It is up to YOU to get the absolute best out of the kit you have received.

Yes, there may be the odd scratch or dent, or glue spot to deal with, but these should just sand out. You may even find small cracks or other imperfections, which can be filled with no effect on the guitar’s tone. Any large cracks, especially at joins, should be reported immediately, so we can replace or refund your kit.

### ***OK, so the Postman has just left me a big box of bits... what do I do now?***

Firstly, make sure everything is there. Our factory is very good at ensuring everything is included in your kit, down to the very last screws, but it always pays to check.

If you think you are missing something, please double(triple)-check before contacting us.

Make sure small parts aren’t caught up in the paper or foam packaging material... make sure you check all the filler materials before recycling.

Lay out the parts and ensure everything is there and nothing is broken.



Photo by Dedman

Check that all parts are present. A good way to do this is to put all the parts loosely on the body and neck.

If you are not sure what a part is for, no problem. Take a quick photo of the part and post it on the [General Support](#) Forum.

### Now, before we go any further, some advice:

1. Work safe! Sharp tools, dust, glue and paints all have their own risks. Please read the precautions on the packaging and be aware of your surroundings (heat, water, electricity).
2. Measure twice, cut once. Make sure you mark, then measure again before cutting or drilling anything.
3. If you aren't sure about something...STOP. Get advice from the Forum. Posting pictures of your issue will make it much easier for members to give advice.
4. "Sand, sand, and sand again. Then, when you think you have sanded enough, sand it some more." – our Resident Luthier's motto. Note: If your kit has a veneered top; such as Spalted, Flame, or Quilted Maple, do not sand the veneer. The veneer is less than a millimetre thick and is incredibly easy to sand through it.
5. Don't rush! Mistakes usually occur when we aren't concentrating, the more time you put in the better the end result will be.
6. Always lubricate screws before putting them in. Have a block of bees wax or soap on the bench and just wipe the thread of the screw along the edge of the block. This will make the screw easier to drive in and will stop it binding and being difficult to remove in the future.
7. Use quality screwdrivers, the \$2 bargain ones will wreck the heads of your screws making them ugly and hard to remove.
8. Use a drill size slightly smaller than the screw. If you hold the drill over the shaft of the screw you should still be able to see the threads on both sides.
9. Work clean. If you get glue or paint on your hands, stop work. Clean them. There is nothing worse than turning your master piece over and finding finger prints on the back.
10. Enjoy yourself. If you are getting frustrated or tired, stop work, come back to it later.

### What tools do I need?

You will need the following tools:

- File or fine rasp
- Sandpaper (180 grit to 2000 grit)
- Steel wool (0000 grade)
- Coping saw (only if your kits head stock came unshaped)
- Electric Drill
- Drill bits, 1mm, 1.5mm, 2mm, and 3mm
- G Clamps
- Pit Bull Guitars Wood glue (for set neck kits)
- Screw drivers, both Phillips (sizes small 0 med 1 and large 2) and flat head
- Long straightedge (600mm rule) and tape measure
- Soldering iron
- Electronic solder (there is some included with your kit)
- Clean rags
- Pencil
- Eye protection

- Wire cutters
- Guitar Tuner

## Nice tools to have, but not essential:

Notched straight edge (available in the Pit Bull Guitars store)

Fret crowning file (available in the Pit Bull Guitars Store)

Random orbital sander (not the 1/3 sheet sanders, they leave circular scratches)

12" Radius sanding block

1" & 2" sanding drum (fit in the electric drill)

Helping hands alligator clamps

Portable clamping workbench

Digital callipers

Multi-meter

Jigsaw



Photo by Pit Bull Guitars

## Really nice tools to have:

Drill press

Set of nut files

Dremel (or similar rotary tool) and bits for sanding and polishing.

Air brush and compressor.

Large workbench with a vice for holding small parts.



## DIY Guitar and Bass Kit Instruction Manual

### Building Your Pit Bull Guitars Kit

#### “Mock Build” and Fitting the Bridge and Neck

##### Test fit the parts

Now that we know we have everything, we can do a “Mock build”; also known as Dry Build or Test Fit.

This is an important step, as it is now that we check that everything fits as it's supposed to.

Now is also the time to make any adjustments for upgrades you have planned; such as different tuners, bridges or pickups.

It is far easier to make any adjustments or modifications before applying any finish.

- Fit the tuners, finger tight (no need to drill the fixing screw holes just yet).
- Test fit the pickups (again no need to drill the holes just yet, just make sure they fit in the cavity).
- Place the pick guard in position and check for fit. Have a look at some of the finished guitars on our Forum if you are not sure how the pickguard should be placed.
- If you are using aftermarket switches and volume/tone pots, you will probably find the holes are too small. The best tool to enlarge the holes is a reamer. If you don't have one you can use an electric drill going in reverse at slow speed. This will help avoid any tear out. Alternatively, you could use a round file, or sandpaper wrapped around a thin rod.

Doing all the fitting and measuring now, before any finish is applied, is far easier and avoids any slips or scuffs ruining your work. So, basically, we loosely assemble the guitar, then take it apart again before applying our paint or stain.

#### Fitting the Neck

Gently seat the neck heel in the pocket.

Hopefully, you have a nice tight fit in place, and maybe you even need to do some sanding to get the neck in place. Sand the neck pocket rather than the neck heel, using a sanding block to keep things straight. Do not sand the floor of the neck pocket or the heel of the neck, there is a "break angle" incorporated into the routing that we don't want to modify as it sets the string angle over the fret board.

Lightly clamp the neck in place being sure to put some padding (cardboard or soft foam), or a wood block with fret grooves cut, between the clamps jaws and the frets and the underside of the neck pocket. See following image:



Photo by Kick

Neck clamped with wooden block, with grooves cut top protect the frets.

### Checking the Scale Length

Now comes some important measuring. Find the scale length for your instrument. Most Pit Bull Guitars 6 string guitar kits are either 25.5 inches (648mm) or 24.75 inches (628mm) and most bass kits are 34 inches (864 mm). It should say in the Product Description what scale length your kit is. If in doubt, please ask the Forum.

If you measure from the inside (face) of the nut to the top of the 12th fret, then double that measurement, you will have the scale length of your neck.

The bridge needs to be situated so the saddles are at a position that allows them to be adjusted for setting the intonation later, so set the saddles to the middle of their adjustment and check that it is approximately at the end of your scale length.

**Protip:** you will hear a lot of guitarists say, “the distance from the inside of the nut to the 12<sup>th</sup> fret should be the same as the 12<sup>th</sup> fret to bridge saddle distance”.

It's not quite that simple. You will see that on all guitars (electric and acoustic) that the bridge is on an angle. The reason for this is that the thicker strings (EAD), require more distance (from the 12<sup>th</sup> fret to the bridge saddles than the thinner strings (GBE). This compensates for the vibration characteristics of the thicker strings. See image below:



Now might be a good time to sit back and watch our video on scale length, featuring Gavin Bramley for Bramley Guitars. Check it out here:

<https://www.youtube.com/watch?v=YJTQLNscgg&t=7s>

### Fitting the Bridge/Tailpiece

Fitting the bridge/tailpiece/tremolo will depend on which kit you have.

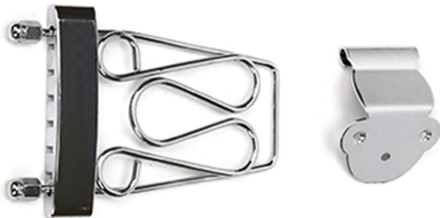
#### Tune-O-Matic® style:



Don't press in the threaded inserts yet. Instead wrap either multiple layers of masking tape or some plastic tubing around the posts and push them into the post holes in the body. We aren't going for a precision fit, just something to hold them in place while we do some measuring.

#### Trapeze style bridges:

Measure the guitar body width at various points and mark the centre line with a soft pencil. Do this on both sides, which will give you a centre line. Mark it onto the edge (side) of the body by joining the first two lines. Now, take the small plate part of the trapeze tailpiece and mark where it will go (the centre hole will be on the line). Mark all 3 holes and then drill with a



2mm drill. Attach the 2nd part of the trapeze tailpiece and lightly screw the 3 screws in.

If your guitar has the fixed style bridge (with the saddles), wrap some tape or rubber tube around the posts and slip

them gently into the holes, don't install the threaded bushings into the body yet.

#### Bigsby® Style tremolo:



The same process applies for the Bigsby® style tremlo, mark a centre line in the body and on the string bar of the tremlo, line them up, drill and lightly screw in place. The bridge itself can be held in place as per the Tune-o-matic® style.

## Floyd Rose® (Genuine or Licensed) Tremolo:



The Floyd Rose® tremolo balances on 2 posts; the holes for which are pre-drilled. For the point of this exercise (preparing to fit the neck) it can simply sit in place in its cavity with a steel rule under the back to hold it up.

## Standard tremolo style:



Much like the Floyd Rose® except it has 6 fixing screws across the front. At this stage, we don't need to drill them.

## Standard plate style bridge:



Mark a centreline on the body and on the bridge and line them up. Make sure the saddles are in the middle of their movement range. The bridge is held in place by the screws at the back of the bridge, mark the positions when you have the centre of the saddles at the end of your scale length. If you are using an aftermarket bridge pickup and possibly even the factory one you may find that the cavity is too far back and needs to be opened up for it to fit. If you have a router, it's a small job to open the cavity up a bit. If you don't (like most of us), a sanding drum on a rotary (dremel) tool or cordless drill will also do the job... so will good old sand paper and elbow grease. (aren't power tools wonderful?)

## Bass bridges:

Most bass bridges can use the Standard Plate Style instructions or the Tune-o-matic® top instructions.

### Test fitting the Neck

With the neck lightly clamped in place and the tuners for both E strings in place, install those 2 E strings (the thickest and thinnest). No need to tune them yet, just put enough tension on them to be tight.

Now check that the strings are running parallel to the neck with equal space between the string and the edge of the fretboard, as in the following images.



Photo by Dedman

\*note this clamp has soft jaws in place, if yours doesn't have them use a piece of cardboard, soft foam or wood (with fret grooves cut) to protect the frets and neck.

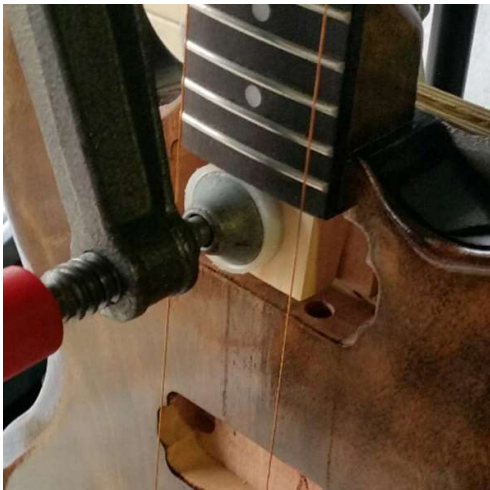


Photo by Marcel

Set (Glued) Neck clamped by the extended heel.

### Checking neck alignment

If things don't line up, check you have the neck heel properly seated in the pocket. Some kits may have a bit of "wobble room" in the pocket, so try moving the neck until you have the strings correctly aligned along the fretboard. In some cases, you may even need to do some very careful sanding on the neck pocket until the strings do correctly align.

Also, while you are here, check the break angle of the neck... the strings should clear the frets but not by much. Remember, the bridge when installed properly will have string height adjustment.

If your kit has a bolt on neck, you can take a suitable size drill, check how deep the holes need to be (you don't want to be drill through the fret board). Don't forget to account for the neck plate thickness.

Put some tape around the drill bit as a depth marker and drill the neck mounting holes.



Don't install the neck yet, we have work to do on it yet!

If your kit has a set (glued in) neck, you need to decide whether you glue the neck in now or after sanding and finishing.

It is much easier to work on the guitar while it's in 2 pieces. However, if you want a seamless join between neck and body, it's better to glue it before final finishing.

You can, of course, fit it sometime in between. Much will depend on the type of finish you decide on (ie, stain versus solid colour).

### Preparing the neck

Depending on which kit you have, you may need to shape the headstock. Many of our kits come with a "Paddle" headstock. This means the factory has left you a blank canvas to shape your own headstock.



6 Inline "Paddle" Headstock



3-a-side "Paddle" Headstock

If you have a “Paddle” headstock, then the design is entirely up to you.

If designing your own, please remember the strings exert a lot of force on the headstock (especially basses), so leave plenty of wood around the tuner holes.



Photo by Pit Bull Guitars

*Cutting with a jigsaw*

Check out our YouTube Video for shaping the headstock here:

<https://www.youtube.com/watch?v=YPNvCnhUiYY>

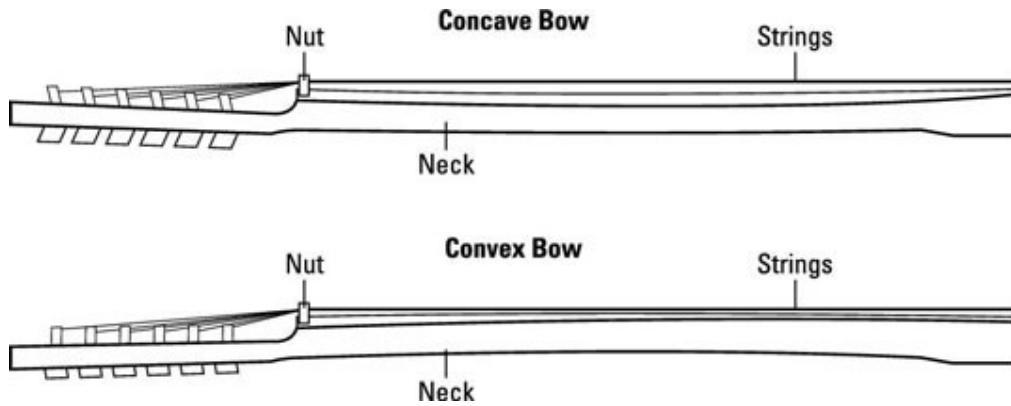
Next step. We need to check if the neck has any bow in it. A [notched straight edge](#) is the quickest easiest way to do this.

If the neck has a concave bow, then turning the truss rod nut to the right (clockwise) tightens the rod and straightens the neck out (and if it is continued to be turned, will finally introduce a convex bow).

If your neck has a convex bow, then turning the truss rod nut to the left (anti-clockwise) will reduce the amount of bow, then hopefully straighten the neck and then introduce a concave bow.

**Protip: your kit should arrive with a slight convex bow. If this is the case, there is no need to adjust the truss rod now; as when you attach the neck and install and tension the strings, this convex bow should flatten perfectly.**

**Minor adjustments can be made once the strings are installed and tensioned.**



*Using a Notched straight edge*



Photo by Dedman



Photo by Dedman

Don't be too critical on the neck bow just yet, as the string tension will change the curve once it's all set up.

For the next step, we need either a 12" radius sanding block or a large straight edge. A builder's level, about 600mm (2ft), is also ideal.

Mask up the fret board with tape, leaving the frets visible.

Use a felt pen or Sharpie® to draw a line on the top of each fret, then, with some fine (400) wet and dry sandpaper wrapped tightly around your straight edge make a few passes over the frets. Any high frets will immediately lose their marking.



Photo by Dedman

*marking frets with marker pen*



Photo by Dedman

*light sanding shows the high spots*

Check that the fret is properly seated. If it is clearly sitting a little high (proud), it can be given a few taps with a plastic hammer or a small block of wood on the fret. Usually, a few more passes with the sandpaper and straight edge will see all the frets shiny and the marker gone.

Of course, now we have flattened the tops and need to recrown the frets.

You can purchase a Fret Crowning File from our Shop, [here](#), or crowning frets can be done with patience and a small triangular file.



## DIY Guitar and Bass Kit Instruction Manual

Pay extra attention the ends of the frets. You can then finish polishing the frets with 000 steel wool or 2000 wet and dry paper. Do keep plenty of layers of masking tape over the fret board during the process, so any slips don't end up as a gouged fretboard.

If you don't want to use masking tape, fretboard protectors and fret files are available from the Pitbull store, [here](#).

Take your time and be patient. Time spent here will make the world of difference to how your instrument plays.

The final finish on the fret board will depend on what timber it is. Rosewood and Ebony are usually left bare and given a coat of lemon oil or [Dingotone Guitar Wax](#).

Maple boards can be given a clear coating of [Dingotone \(neck kit\)](#) or [Tru Oil](#) to seal them.

For fretless basses, a couple of coats of super thin CA glue (supa glue), sanded with very fine paper between coats will provide a hard smooth surface.

### Painting or Staining.

#### Preparation for finish

Now we must decide on how our finished guitar is going to look. Basically, there are 2 choices, a solid painted colour or a stain, with either clear coats or some form of oiled finish over the top. Either will require a good foundation to give the best result, and that foundation is... sanding.

Don't skimp on cheap sand paper, it's false economy as you will get much more use from good quality product as well as a better job.

**If your kit has a veneered top such as Spalted, Flame, or Quilted Maple, DO NOT SAND THE TOP!** The veneer is less than a millimetre thick and it is incredibly easy to sand through it.

If your kit has binding, it is best to mask it up with masking tape as deep sandpaper scratches will draw in stains or paints later and be difficult to clean up.

Sandpaper grades given here are ISO/FEPA, as used in Australia and Europe. USA grades differ, Wikipedia has a conversion chart.

On solid body guitars start with 120p or 180p grit to remove the worst machining marks (basswood is soft and 180 is a good place to start).

Always sand with the grain of the timber and use a sanding block to keep the paper flat on the surface.

You can use a random orbital sander at this stage. These are usually the circular pad type.

Avoid the 1/3rd sheet rectangular sanders as they tend to leave circular scratches in the surface that require even more sanding to get out.

**Always sand in the direction of the grain.**



Photo by Dedman

*Sand in the direction of the grain*

The edges and cutaways usually require the most sanding. Various diameter cardboard tubing or even aerosol cans are great for using as sanding blocks in cutaways. Do the edges by hand to get a nice rounded feel.

After the initial sanding it's time to check for glue marks or cracks. Small cracks or dents can be filled with a wood filler matching your final finish.

Glue spots (glue from the factory, usually in "spots", left on the body or neck) are only a concern if you are staining rather than using a solid colour. The best way to check for glue marks left by the factory is to run over the body and neck with a damp rag (damp, not wet) glue will show up as whitish marks.

You especially need to check for glue spots on veneered tops and kits with binding, stains will not soak into or adhere to glue.

On the back and sides of a solid body, glue spots can usually be sanded out and filler applied, if necessary.

On veneers the best method found so far seems to be a product called "Goof Off". Applied to the glue spots and rubbed until the glue is dissolved. Using a very small soft wire brush (tooth brush size) will also help, but be very, very careful on those thin veneers.

Don't sand beyond 220 grit, as we need the surfaces to have some "tooth" for the finishes to stick to and sanding too fine will polish the wood and stop stains from penetrating evenly.

*Holding the body for finishing*



Photo by Dedman



Photo by Dedman

*A handy way of holding a body for painting or staining is a piece of timber attached in place of the neck. (notice the toothpicks used to block screw holes)*



Photo by Dedman

*or a dowel in the output jack hole.*

Mask any binding with masking tape (the plastic pin striping tape curves nicely and forms a better seal on the edges). For hollow body guitars, stuff the body with crumpled paper to avoid drops landing inside the F holes.

Also mask the neck cavity and heel on set (glue in) neck kits, as any paint or stain will prevent glue from penetrating. Advanced painting, such as bursts and paint effects, will be covered in future Forum tutorials.

Check out our Sanding video here:

<https://www.youtube.com/watch?v=NE40TZ38nmU>

### Painting

Painting is probably the easiest finish to do, but getting that glassy, mirror-like finish you see on Factory guitars. It is a skill that can take years to master... ask any Auto Repairer.

For painting, you can choose from enamels, auto acrylic or special nitrocellulose guitar finishes; either in aerosols or requiring a compressor and spray gun.

One thing they all have in common is that the top coat will only be as good as the ones under it. You can get a good finish with a brush if you are prepared to do the prep work and sanding. We strongly recommend you buy the best brush available and keep it clean.

A sanding/grain filler or a diluted slurry of filler like "Timbermate" will fill the grain of the timber leaving a smooth base for your paints. Apply, then sand to 320 grit.



## DIY Guitar and Bass Kit Instruction Manual

Start with the recommended primer for the paint you are using.

Spray cans that say they don't need primer are generally made for use on steel, ask the retailer for suitable primer for wood.

Put on a thin coat of primer and allow it to dry for at least 24 hours. Then, sand it back with 320 grit sandpaper. Yup, you sanded through the primer, back to bare wood on the edges and some other spots. That is good!

Now, apply another coat of primer, doing the edges first, paint the body, then give the edges another coat. Allow to dry for another 24 hours, sand and repeat, then again and sand with 400 grit paper.

You should be able to sand it silky smooth now with no high spots and no grain showing. Allow to dry for several days, preferably a week before applying top coats.

Top coats are a repeat of the priming process. The first coat mostly gets sanded off quickly showing any low or high spots you had missed. 4 to 6 coats with sanding between coats is generally enough.

Finally we get to apply the clear coats. This isn't necessary on solid colours but does add that glassy depth to the finish. Apply at least 4 coats as the clear coats will get sanded quite a lot to get that glassy finish. Move up to 600 grit paper between coats and allow to dry for at least a week. Try the sniff test, if it still smells like fresh paint, it isn't ready for polishing.

It is VERY important to use compatible primer, top and clear coats. Mixing acrylics and enamels will cause chemical reactions leading to bubbling, head banging on the work bench and ....more sanding.

Check out our Spray painting videos here:

Part 1

<https://www.youtube.com/watch?v=IIJs-JCKRKE>

Part 2

<https://www.youtube.com/watch?v=yEoqbB5E8vg>

### Staining

If you want to bring out the best of a nice grain pattern on your body; like any Pit Bull Guitars kit with a veneered top; staining is the way to go.

There are countless brands and types of timber stains on the market. Just like with painting make sure that your final clear coats are compatible with the type of stain you choose.

Pit Bull Guitars sells and recommends Dingotone finishes.

Made right here in Australia from 100% natural ingredients, this finish is both safe to use and even has a pleasant citrus smell... something to consider if you are building your kit in an apartment.

Dingotone is available in a wide range of colours and comes with a comprehensive set of instructions. There is even a sub-forum just for Dingotone questions, tips and tricks.

Check out our Dingotone Application videos here:

Part 1

<https://www.youtube.com/watch?v=KSfFbCbYxBk>

Part 2

<https://www.youtube.com/watch?v=RlieP-qpRrA>

There are many alternatives to hardware store stains; like timber dyes, fountain pen inks, even homemade mad scientist mixtures of tea, coffee and other strange substances can be used if you are confident of what you are doing. Beginners are best to stick with commercial products.

Regardless of which type of stain, follow the manufacturer's directions for applying it.

Clear coats will depend on what stain you have used. Again, follow manufacturer's directions. How many coats to apply will depend on the final finish you want. If you want the grain texture to show and the clear to simply seal the timber, then 4 thin coats will usually do the job. If you want a glassy finish, be prepared to do many, many more coats, with sanding in between.

For example, the double cut body with spalted maple top, used in some photos in this manual received 30 thin coats of Tru-Oil wiped on, with sanding after every 10 coats. (the actual veneer top was never sanded, the layers of Tru-Oil filled and levelled the surface)

Patience has its rewards!.

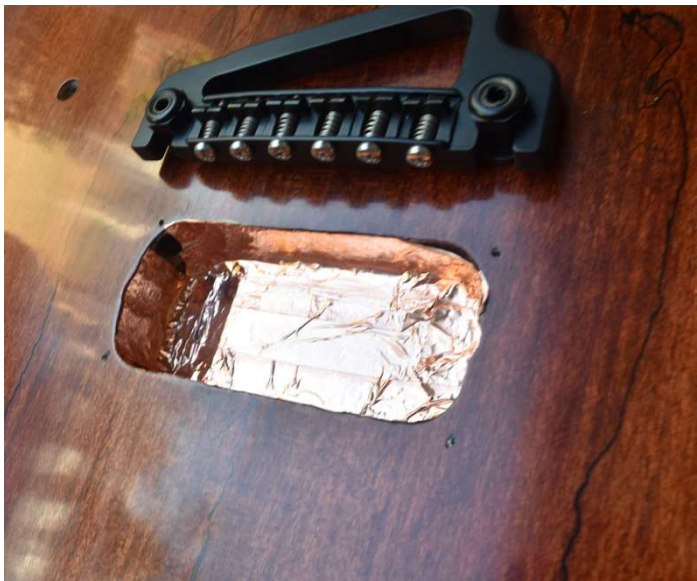


Photo by Dedman

*30 coats of Tru-Oil*

### Polishing

If you thought sanding was fun, wait till you try polishing!

Now that we have our guitar stained or painted and our final top coats on, it's time to make it shine.

Start wet sanding at about 1000 grit wet and dry paper, then work up to 1200 then 2000. If your local hardware store doesn't carry these finer grades; an auto accessory store will have them.

You don't need to rub too hard, even these fine papers can bite right through the surface if you aren't careful, especially on the edges. If you see colour on your paper, stop! Put some more clear coats on!

It's a good idea to fill any screw holes for pick guards or pick up rings with toothpicks while wet sanding, this prevents water from getting under the edge of the paint and swelling the timber.

The ideal result of your sanding will be that the surface looks completely flat, but slightly matte finish when dry, and super glossy when wet. You could keep sanding with micro mesh pads all the way up to 10000 grit, this is up to you and the availability of said pads in your area.

Next up we use a good quality cutting compound available from auto accessory stores. Give the whole body, back of the neck and the headstock a good hard polish with the cutting compound, you should notice a nice gloss developing.

Finish off with a high-quality auto polish, sit back and watch your reflection. Have cup or glass of your favourite beverage and congratulate yourself on a job well done.

### Wiring and final Assembly.

#### Shielding

Before we begin wiring our guitar, we first need to shield the pickup and switch cavities. This prevents electrical noise from fluorescent lights and other electrical equipment causing humming that gets picked up and amplified by the guitar. There are special shielding paints, but we recommend using copper shielding tape (available [here](#)). It is easy to install and less messy.

Simply cut strips to size, peel the backing paper off and stick to the insides of your pickup and switch cavities. Be sure to do the back of loaded pickguard models (like the ST kits) and the back of switch cover plates on other styles. Leave a slight overhang on the cavity tape so that it contacts the copper on the cover. A drop of solder between strips will ensure a complete earthed circuit.

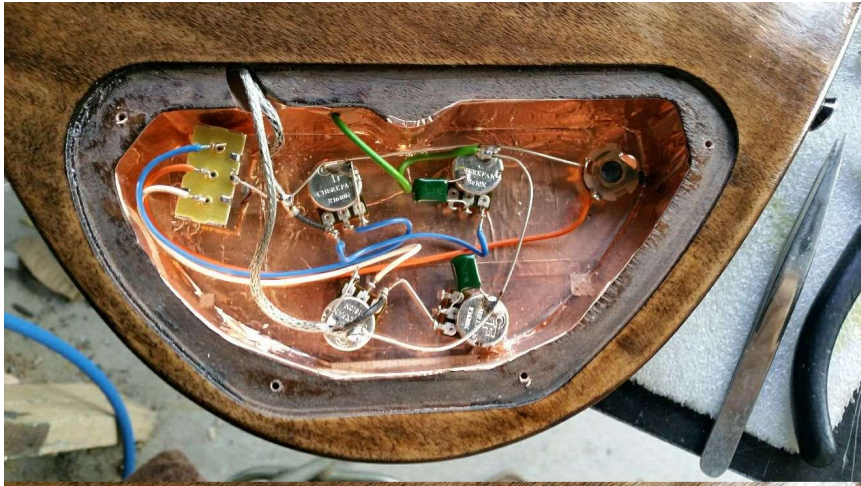


Photo by Dedman

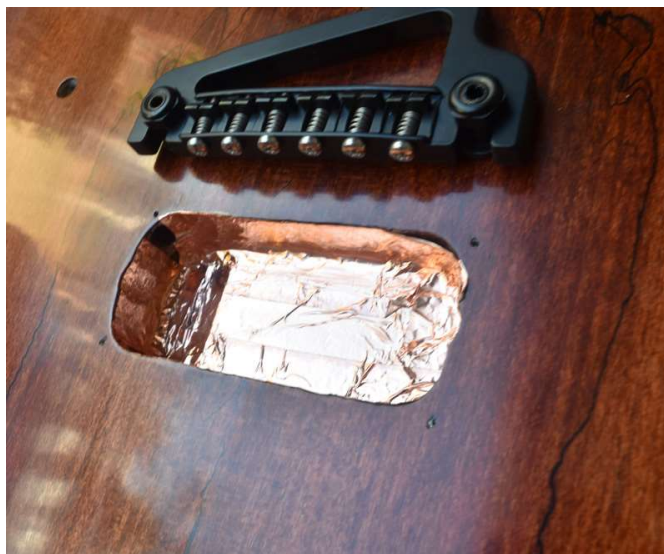


Photo by Dedman

### *Shielded switch cavity and pickup cavities*

#### **Wiring**

Possibly the most intimidating part of construction for many kit builders is the wiring.

The wiring is really not that difficult if you take your time and have the right tools. On some kits (like the ST, TL, JM, JB and PB models), most of the wiring is done for you at the factory, just leaving you to solder the pick up connections, bridge earth and output jack connections. Other models, where you need to do all the wiring, are more involved.

Wiring diagrams are available on the PitBull website here :

<http://www.pitbullguitars.com/wiring-diagrams/>

If you have never soldered before, don't panic, it is really not that hard... and is really a lot of fun.

Check out our Intro to Soldering video here:

<https://www.youtube.com/watch?v=ievAbBV0Alc>

Individual kit model soldering videos are available here:

<https://www.youtube.com/user/PitBullGuitars/videos>

Wiring on S type and Floyd style bridges

<https://www.youtube.com/watch?v=XUL7T21mJxk>

If we don't have a video on wiring your kit, please ask on our Forum, or have a search online, as there are many great wiring videos on the web.

Please note: the factory does change the wiring colours without notice at times, so if the wiring you have doesn't match the diagrams, please ask on the forums and someone will be able to advise you. Note that wiring diagrams are drawn looking at the back of the pots.

On kits that don't have a pickguard or control panel that the pots and switches attach to, it's a good idea to make a cardboard copy of your control layout and do your wiring there first. Then you can simply take the whole wiring "loom" and place it into your guitar after you are confident the wiring is done correctly and the wires are the right length.

With humbucker pickups; note the thickness of the fitted mounting rings. The thicker one goes at the bridge, the thinner one at the neck. the neck pick up will also have longer wires, as it has longer to travel to get to the controls.

### **A few useful tips:**

Lead free solder is easier to work with.

Tin your wires before soldering. Tinning is simply melting a small amount of solder onto the wire before trying to solder it to a connector. This will hold all the strands of the wire together (avoiding a stray strand shorting your circuit) as well as melting quicker on the contact.

Sand the back of pots before soldering earth wires to it. A quick rub with some 400 or coarser dry paper will remove any grease from the manufacturing process and provide some "tooth" for solder to stick to on the back of pots.

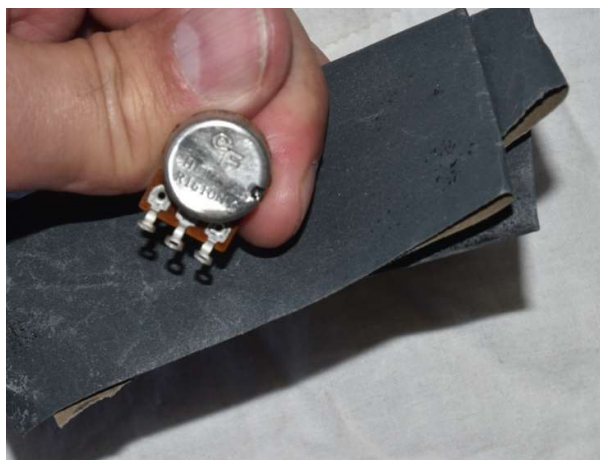


Photo by Dedman

*A quick rub with fine paper to remove grease and create a "tooth" for solder to stick to.*

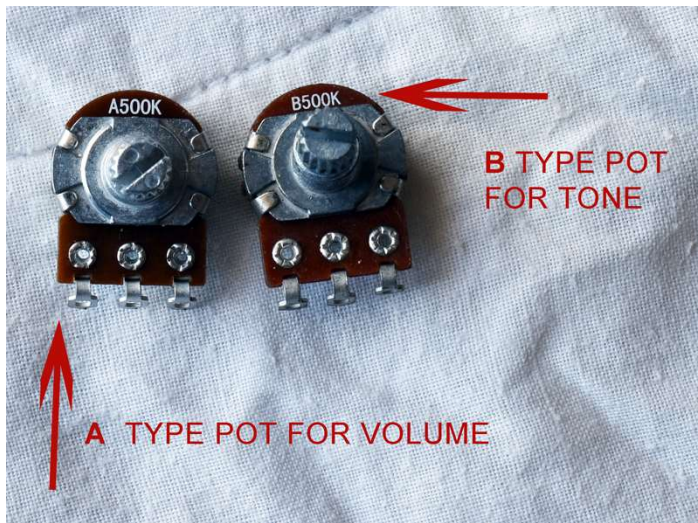


Photo by Dedman

*As a rule...*

*Pots marked A are for Volume, Pots marked B are for Tone. Usually 250K pots are used with single coil pickups, 500k with Humbuckers.*

*Capacitors: .022 caps are used with single coil pickups and .047 with Humbuckers.*

On hollow body guitars getting your pots inside the body and through their holes is difficult.

One solution is to build the loom on a sheet of cardboard then use aquarium tubing fed in through the holes to pull the pots through the body ( after feeding the loom in through the F-holes). String can also be used but the tubing has less chance of slipping off.



Photo by Gavin Bramley

*Using aquarium tubing to manoeuvre pots in hollow body kits*

The most common mistake made in wiring up guitars is getting the jack socket wired backwards. The "hot" wire goes to the tip, the earth to the centre ring. If you look carefully on the sides of the jack you can see the tips connector is insulated under the earth connector, as in this image:



Photo by Dedman

Don't forget to run an earth wire to the bridge.

On stop tail bridges there will be a hole from the post hole leading to the switch cavity, on TL styles and many Bass Kits there is a hole on the top of the guitar behind the pickup cavity and on ST style kits, the wire will run from the tremolo cavity to the switch cavity. Hollow body kits will require a small hole drilled behind where the tailpiece attaches to the body.

Once wired up, you can test your work by plugging the guitar in to your amp and softly tapping the pickups with the end of a screwdriver. Try each setting on your switch. You should be able to hear the tapping through your amp.

### Final Assembly

With our guitar now wired, we can begin final assembly. Don't forget to lubricate the screws with bees wax or soap as you go. It will make them easier to put in and get out again later.

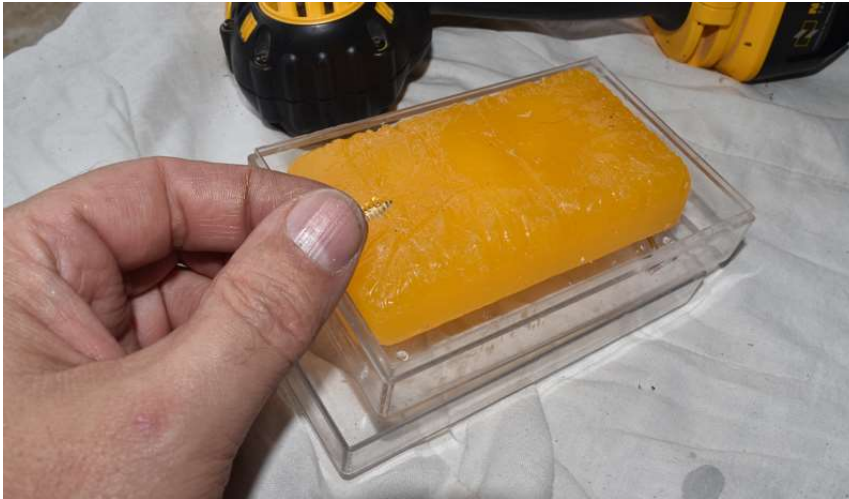


Photo by Dedman

*A little beeswax or even soap will make the screws easier to put in and take out later.*

### Mounting pickups and pick guards

For kits with pickups and/or switches mounted on the pick guard or on chrome panels, these can now be attached to the body. Use a 1mm drill for the pick guard screws, remember the screws are only short so they don't need much of a hole. Use a manual screwdriver; cordless ones are overkill for delicate work and can easily over tighten screws or even worse... tear the head off. The screws just need to be snug.

For kits with the pickups mounted in plastic rings, the fitting is similar. Make sure the pickups are mounted square to the body/neck/bridge. Drill the 4 mounting holes and screw the mounting screws in.

Fitting a scratch plate video here:

<https://www.youtube.com/watch?v=nUNkloMOggY>

Humbucker Pickups and Bridge install video here:

<https://www.youtube.com/watch?v=Vv0tav6YBP4>

### Installing the Bridge

For Tune-o-matic® style bridges and tail pieces, we can now gently tap the bushings into their holes. Use a soft face hammer or a piece of soft timber between hammer and bushing and tap gently. Don't forget to strip off a section of the earth wire we ran earlier and wrap it around the bushing before tapping it in.

Once the bushes are in place you can screw in the bridge and tail piece.

Humbucker Pickups and Bridge install video here:

<https://www.youtube.com/watch?v=Vv0tav6YBP4>

For Floyd style tremolo kits, follow this video:

[https://www.youtube.com/watch?v=Ty\\_kil8GbOg](https://www.youtube.com/watch?v=Ty_kil8GbOg)

TL style bridges video:

<https://www.youtube.com/watch?v=zJnIIMXiI4c>

ST style bridge video:

[https://www.youtube.com/watch?v=11hqPf3\\_rDY&t=42s](https://www.youtube.com/watch?v=11hqPf3_rDY&t=42s)

### Installing the Tuners

Before installing the neck, install the tuners. Place them in position and loosely tighten the collar nuts. For 6 inline tuners, hold a straight edge or metal ruler under the bodies of the tuners to make sure they are in line as in the photo.

Then with a 1 mm drill bit, drill the mounting hole for the screws. Be VERY careful, mark the depth on your drill bit, as it is all too easy to drill right through the headstock.

The screws do not need to be super tight, just snug, their only job is to prevent the tuner from twisting. Once in place, you can tighten up the nut on the other side.



Photo by Dedman

*Use a straight edge or metal ruler to line up tuners before drilling the holes.*

Installing tuners video:

3-a-side

<https://www.youtube.com/watch?v=tQ4XYxzurZ4>

6 inline

<https://www.youtube.com/watch?v=0d7VCoM798c>



## DIY Guitar and Bass Kit Instruction Manual

### Attaching the neck

As we had drilled our holes and aligned the neck earlier, it is now just a matter of installing the screws and plate. If you have a glue in neck and have left it until now to install, allow the glue a couple of days or even a week to dry before putting any tension on the strings.

Bolt on neck video

<https://www.youtube.com/watch?v=-azQ5FMzeXA>

### Final Assembly, Tuning and Intonation

Well our kit is finally looking like a guitar, just a few more steps to go and it will be ready to play!

Install the strap buttons; these just require a hole drilled and screwing in. The rear one is generally on the centre line of the body, the front one in a position on the top horn of the body that will offer good balance.

<https://www.youtube.com/watch?v=8EhrP5O6G5U>

### Fitting the strings

This video covers fitting strings to most models as well as fitting the string trees on 6 inline headstock kits.

<https://www.youtube.com/watch?v=LEC4RC-W6LY>

### Tuning and setting the intonation.

Intonation is vitally important if your guitar is going to be in tune as you move up and down the fretboard. Your bridge saddles have built in adjustment to set this.

The video linked below will explain. For guitars with floating wooden bridges the same applies, but you move the entire bridge in tiny increments, the bridge saddles themselves have built in intonation (notice they aren't in a straight line).

These videos will walk you through setting string height, tuning and intonation.

Set up:

<https://www.youtube.com/watch?v=ad4Xs8h6gwk>

Intonation:

[https://www.youtube.com/watch?v=5nZD\\_9SY1dl](https://www.youtube.com/watch?v=5nZD_9SY1dl)

Now all that remains is for you to enjoy your new guitar!

We hope you enjoyed the experience of building your own guitar and that it brings you years of playing pleasure.